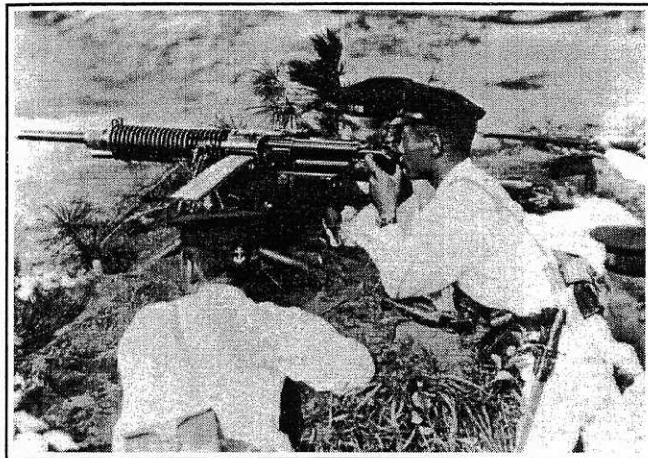


UP NUMBER ONE ROAD



SCENARIO BB15



VICTORY CONDITIONS: The U.S. wins at the end of any Game Turn in which they Control all existing pillboxes, provided they have not lost ≥ 24 Casualty VP.

MANUS ISLAND, the ADMIRALTIES, 16 March 1944: Control of the Admiralty Islands was another step in the strategic encirclement of the Japanese base at Rabaul. The primary objectives in the Admiralties were the two airfields: Momote on Los Negros and Lorengau on Manus. The 1st Brigade of the 1st Cavalry Division successfully secured Momote Airfield on 29 February and the rest of Los Negros by 8 March. The 2nd Brigade, which included the 8th Cavalry Regiment, was assigned the task of taking Manus Island. On 9 March, the 2nd Brigade Combat Team went ashore near Lugos Mission, 2.5 miles west of Lorengau. In a two-pronged attack one week later, the 1st Squadron of the 8th Cavalry moved eastward along Number Three Road, while the 2nd Squadron moved southward down a trail. The 2nd's mission was to reach Number One Road and follow it northward to the airstrip.

BOARD CONFIGURATION:

HANDICAPS:

- U3: Use U2, and add one Roadblock to the Japanese OB.
 U2: Use U1, and add one 1+3+5 pillbox to the Japanese OB.
 U1: In the Japanese OB, replace three 3-4-7s with three 4-4-7s.
 J1: Add one 3-4-7 and one FT to the U.S. OB.
 J2: Use J1, and none of the pillboxes receive tunnels.
 J3: Use J2, and increase the game length to 12 Turns.



34

TURN RECORD CHART

<div>● JAPANESE Sets Up First [165]</div> <div>☆ AMERICAN Moves First [161]</div>	1 [☆]	2	3	4	5	6	7	8	9	10	11	END
---	----------------	---	---	---	---	---	---	---	---	----	----	-----

Elements of the 14th Naval Base Force [ELR: 3] set up on/between hexrows E and BB (see SSR 2): {SAN: 5}

	5	5	5	2	3	2	3		4		



Elements of the 2nd Squadron, 8th Cavalry Regiment [ELR: 3] enter on Turn 1 along the south edge: {SAN: 3}

13	3		2		2	2	3				

SPECIAL RULES

- EC are Moderate, with no wind at start. PTO Terrain (G.1) is in effect [EXC: the road running A5-P5-Q6-GG5 still exists; the V5 Bridge becomes a Ford as per G.1].
- All pillboxes must set up in road hexes.
- In addition to losing HIP normally, any roadblock will be revealed when a Good Order U.S. unit gains an LOS to its hex across the roadblock hexside.

AFTERMATH: At the juncture of the trail and Number One Road, the 2nd Squadron found three pillboxes. It took a combined assault from tanks, bulldozers and infantry to overcome them. Then, accompanied by one tank and one bulldozer, the 2nd Squadron started the arduous task of fighting its way up Number One Road. The Cavalrymen took advantage of the heavy jungle bordering the road as they approached the airstrip. In the process, they reduced eight enemy pillboxes blocking the road. Progress was slow, and their advance cautious and measured. At dusk, they were 100 yards south of Lorengau Airstrip, but had suffered few casualties during the day's fighting.